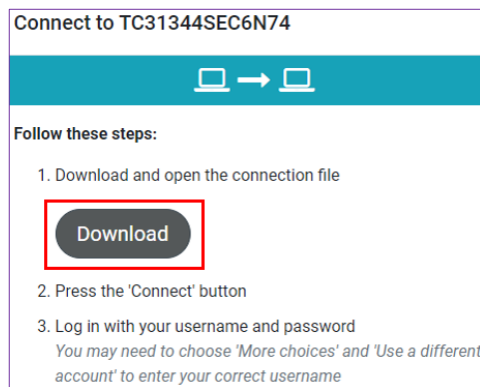
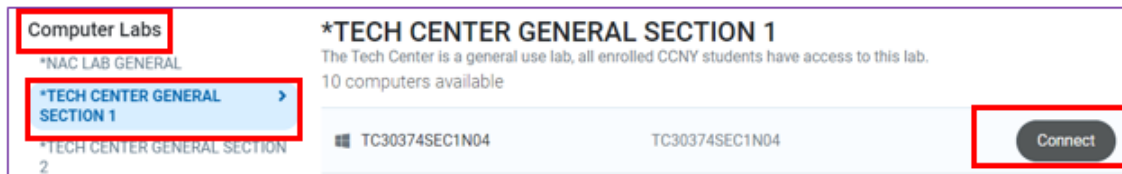


PC

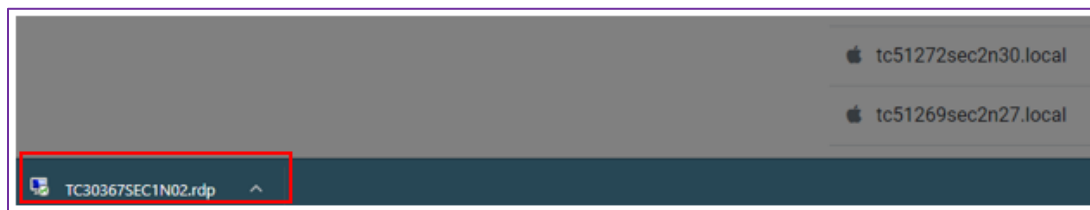
1. **To access Labstats**

Link: <https://remoteaccess.labstats.com/City-College-of-New-York>

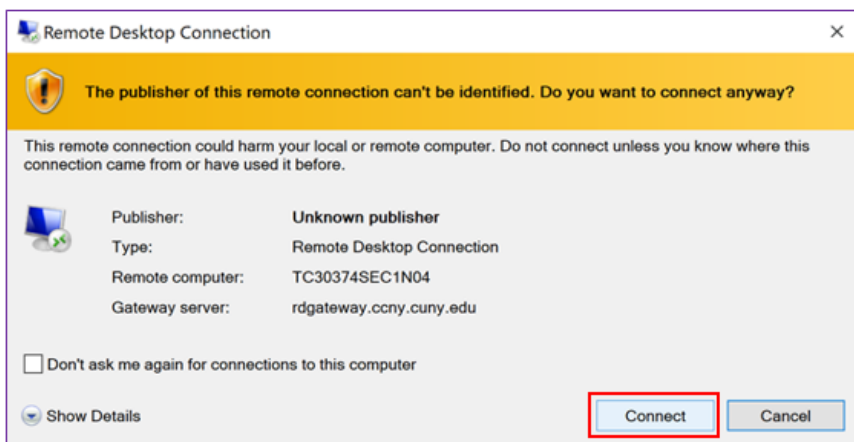
2. Under the **Computer Labs** column, select the lab section you will like to connect to, and click **Connect** next to the computer. Click **Download**.



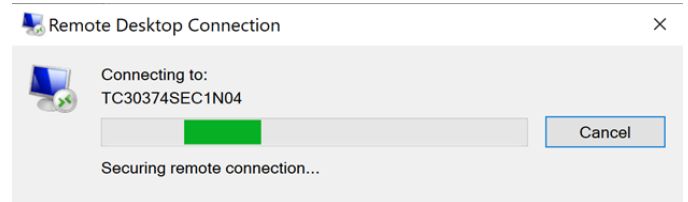
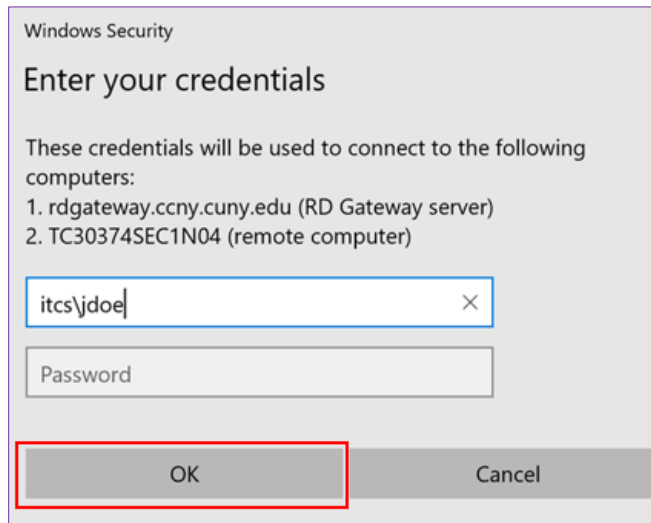
3. The file will begin downloading and upon completion run the file. It may appear on the bottom as indicated below by the red square:



4. Click **Connect**

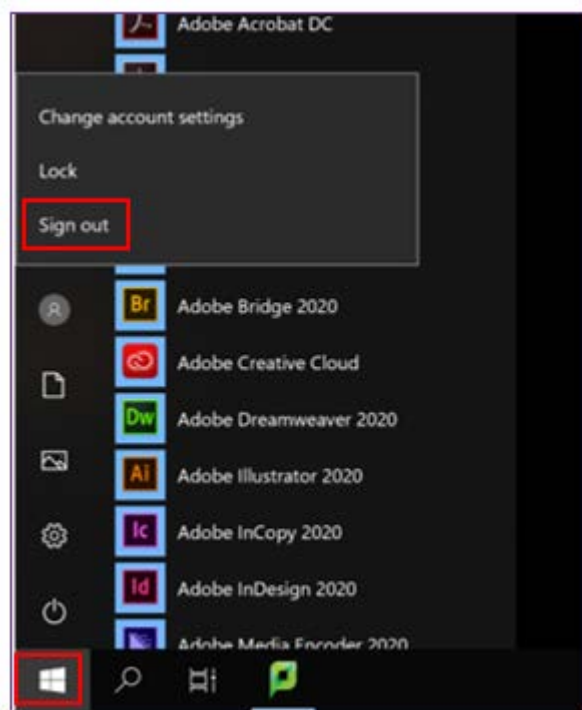


5. Enter Citymail username and password click **OK**.
Note: username i.e. itcs\jdoe000



Upon completion, you will have access to the remote desktop

6. When finished with the session, click on the **Start menu** (on the remote computer)



7. Click on your avatar followed by the **Sign Out** option. This will sign you out from the remoted computer.
DO NOT click Shut Down, or Restart it will not allow for users to access this workstation.